

Bricktie® SCF

Product Data Sheet

General description

Bricktie® SCF is a ladder type masonry reinforcement element that consists of a 20 x 3mm flat tie welded to two longitudinal flattened reinforcing wires.

Application

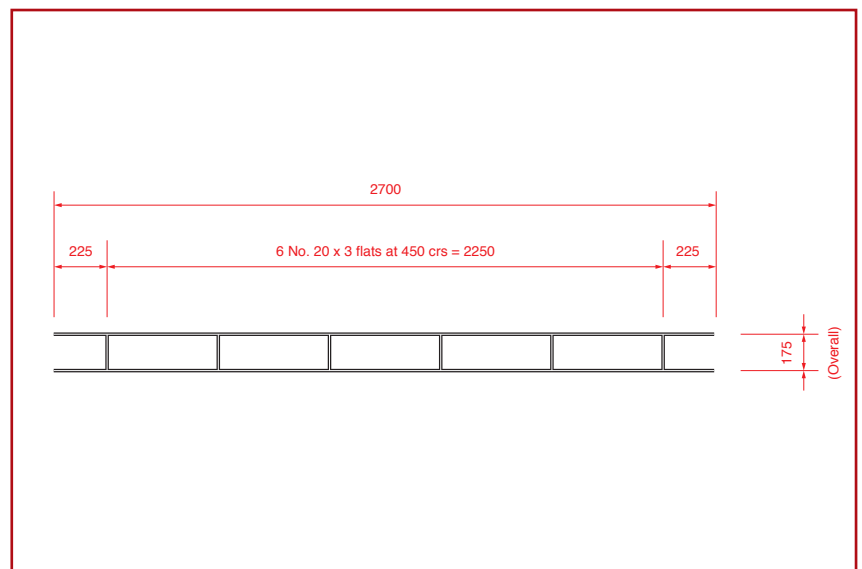
- Bricktie® SCF (stainless steel) is suitable for masonry that is exposed to dampness (e.g. facades) or an aggressive environment (MX2, MX3, MX4 as per Eurocode 6 / EN 845-3, type in consultation with Bekaert) MX1, compliant with Eurocode 6 / EN845-3).
- A galvanized version Bricktie® GCF is available for use in a dry environment (MX1 as per Eurocode 6 / EN 845-3). Please contact us for further details
- Bricktie® SCFF is suitable for mortar joints (10 to 12 mm thick).
- Bricktie® SCF is widely used for tying and reinforcing composite masonry walls

The use of Bricktie® allows the construction of collar-jointed walls - made up from two thinner blocks. By tying the two masonry leaves together, the wall may be designed as if it were solid construction.

The use of Bricktie® also enables a fair-faced block finish to both sides of the wall by adopting a collar-joint construction. Similarly, a single solid brick wall 215mm in thickness can be constructed using stretcher bond coursing without the need for any additional ties.



Geometry



Dimensions and weights

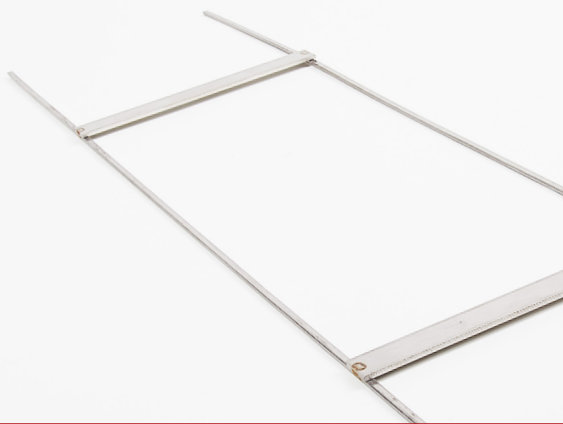
Bricktie® is 175mm wide being specifically designed to reinforce and provide structural wall ties to suit a 215mm thickness composite masonry wall.

Material	w	pitch	$\phi_{\text{longitudinal}}$	profile _{longitudinal}	$\phi_{\text{cross-flat}}$	length	weight
	a	b	c		d	L_{nom}	
-	mm	mm	mm	mm	mm	mm	kg/pc
Bricktie® SCF35W175	175	450	3,50	2,75 x 4	20 x 3	2700	0,911
Bricktie® SCF40W175	175	450	4,00	2,75 x 5	20 x 3	2700	1,052
Bricktie® SCF50W175	175	450	5,00	3 x 8	20 x 3	2700	1,395

Technical specifications

Material	$A_{\text{longitudinal}}$	$A_{\text{cross-flat}}$	$A_{\text{TOTAL ex cross-flat}}$	$R_{p0.2}$	EN 845-3 mat coat ref	Zinc (1)
-	mm ²	mm ²	mm ²	N/mm ²		g/m ²
Bricktie® SCF35W175	9,62	60,0	19,24	500	R3	NA
Bricktie® SCF40W175	12,57	60,0	25,13	500	R3	NA
Bricktie® SCF50W175	19,63	60,0	39,27	500	R3	NA

(1) on round wire before any subsequent processing



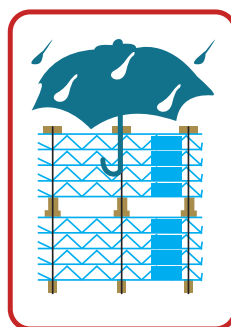
Packaging

- Bricktie® can be supplied in multiples of single strips.
 Full pallet is: Bricktie® SCF35W175 = 700 units
 Bricktie® SCF40W175 = 700 units
 Bricktie® SCF50W175 = 500 units
- Each bundle has a product label

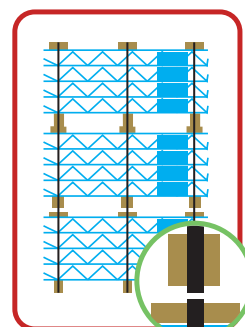
Packaging units

Material			Per pallet	Per pallet
	pcs	lm	pcs	lm
Bricktie® SCF35W175	1	2,7	700	1890,0
Bricktie® SCF40W175	1	2,7	700	1890,0
Bricktie® SCF50W175	1	2,7	700	1890,0

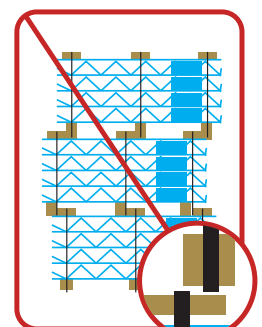
Storage instructions



STORE DRY



RIGHT



WRONG

Certificates

- CE, compliant with EN 845-3. The document "EC Declaration of Conformity" is available upon request

Bekaert Ltd.
 The Gateway Business centre
 Unit 7, 5 Leeds Road
 Sheffield S9 3TY, UK
 T +44 1142 427 489
 F +44 1142 427 490
 building.uk@bekaert.com

NV Bekaert SA
 Bekaertstraat 2
 8550 Zwevegem
 Belgium
 T +32 56 76 72 92
 F +32 56 76 72 90
 infobuilding@bekaert.com
 www.bekaert.com/building

