

Geoplast Formwork

The simple formwork solution



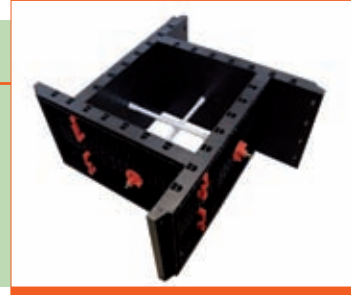
Geotub
Circular formers



Geotub Panel
Square/rectangular formers



Geopanel Star
Adjustable square/rectangular formwork



Geopanel
Universal formwork panels



Improving choice, quality and service

Geoplast Formwork

The simple formwork solution

Advantages

- Lightweight units that are fast and simple to install. Handles lock the units into position with a 90° turn
- Economical and cost effective. Many repeat uses with very little maintenance
- Easy to clean. Just rinse with water
- Easy to store. Can be completely dismantled. Does not need to be stored in a dry environment
- Robust units are resistant to damage
- No release agents needed. Concrete will not stick to the plastic surface
- Outer side of panels are ribbed to allow easy plumbing and anchoring of props
- Environmentally friendly. Many repeat uses and made from recycled materials
- Geopanel Star is adjustable and hence reduces the amount of sizes required
- Reduces pressure on crane time as formwork panels can be fixed and struck by hand



Easy to clean



Lightweight units



Handles lock the units into position with a 90° turn

call Miers on 01480 702222

e sales@miersconstructionproducts.co.uk w www.miersconstructionproducts.co.uk

Geotub Circular formers

Diameter (mm)	Length (mm)	Maximum Pour Height (m)
250	600	6
300	600	6
350	600	4.8
400	600	4.8
450	600	4.8
500	600	4.8
600	600	3.0
700	600	3.0
800	600	3.0
900	600	3.0
1000	600	3.0



Full brochure and installation guides available



Geotub Panel Square/rectangular formers (10mm built in chamfer)

Width (mm)	Height (mm)
200	750
230	750
250	750
300	750
350	750
400	750
450	750
500	750
550	750
600	750

call Miers on 01480 702222

e sales@miersconstructionproducts.co.uk w www.miersconstructionproducts.co.uk

Geopanel Star

Adjustable square/rectangular formwork

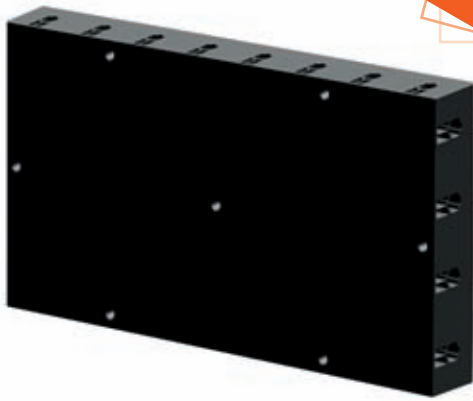
Range of Adjustment		
Star 20 - 60	Star 25-65	Star 70-100
200 x 600	250 x 600	700 x 600
300 x 600	350 x 600	800 x 600
400 x 600	450 x 600	900 x 600
500 x 600	550 x 600	1000 x 600
600 x 600	650 x 600	-



Geopanel

Universal formwork panels

Main Panel 120



Main Panel 1200 x H 600mm

REUSABLE



Inn. Cor.



Inner Corner Element
300 x 100 x H 600mm

Out. Cor.



Outer Corner Element
330 x H 600mm

Geopanel Other Sizes

Panel Number	Width (mm)	Height (mm)
20	200	600
25	250	600
30	300	600
35	350	600
40	400	600



Handle



Construction Products Ltd

Branches

St Neots t 01480 702222 f 01480 702223
Hamilton t 01698 907 101 f 01698 907 102
Warrington t 01925 202 128 f 01925 202 129

Head Office

Hawkesden Road, St Neots, Cambs PE19 1QS

t 01480 702222

f 01480 702223

e sales@miersconstructionproducts.co.uk

www.miersconstructionproducts.co.uk